

**Outlet Box  
for in-line (multiple)  
stanchion mount fixtures**



**GEBT-25 with two 3/4" feed-thru hubs  
and one 1-1/2" vertical hub**

**Typical Applications:**

- Coal Conveyors
- Cat Walks
- Platform Hand Rails



**KILLARK®**



**GEB SERIES  
ALUMINUM  
OUTLET BODIES**

**Wet, Harsh &  
Hazardous Locations**

Distributed by:



**KILLARK®**

# GEB SERIES

## Aluminum Outlet Bodies

Class I, Div. 1 & 2, Groups B\*, C, D  
 Class I, Zone I, Groups IIB + H<sub>2</sub>, IIA  
 Class II, Div. 1 & 2, Groups E, F, G  
 Class III  
 NEMA 4X



Listed File No. E 10514

Certified File No. LR11716

ATEX Pending

### Applications

GEB series conduit boxes are installed in conduit systems within hazardous areas to:

- Protect conductors in threaded rigid conduit
- Act as pull and splice boxes
- Interconnect lengths of conduit
- Change conduit direction
- Provide access to conductors for maintenance and future system changes

### Features

- Suitable for NEMA 4X applications
- Integral mounting lugs
- Green ground screw standard
- External cover thread on body plus smooth integral hub bushing protects conductor insulation when pulling
- 4 different hub arrangements
- Taper threaded hubs provide ground continuity
- External threaded body for additional wiring room
- Covers and gaskets furnished with boxes as standard

### Material/Finish - Aluminum

- **BODY & COVER** Copper-free aluminum (less than 4/10 of 1%)
- **FINISH** Electrostatically applied powder coating

### Size Ranges

- Hub - 3/4" to 1-1/2"
- Cover opening - 3-1/2"

### Applicable Third Party Standards

UL Standard: 886

CSA Standard: C22.2 No. 30

\* 1-1/2" hub sizes require seal within 24" for Group B applications



**KILLARK**



C Type



L Type



T Type

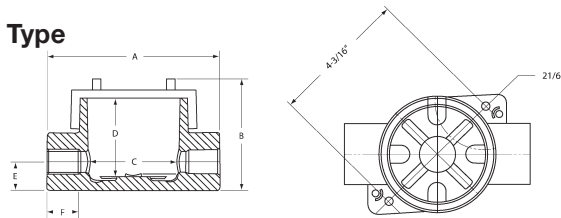


X Type

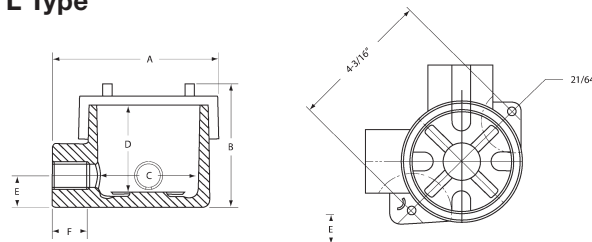
C Type Outlet Body									
CATALOG NUMBER	HUB SIZE	A	B	DIMENSIONS			COVER OPENING	VOLUME CU. IN.	
				C	D	E	F		
GEBC-2	3/4"	6-1/2" (165)	4-5/16" (110)	3-1/4" (83)	2-15/16" (75)	1-3/32" (28)	1-3/16" (30)	3-1/2" (89)	29
GEBC-3	1"	6-1/2" (165)	4-5/16" (110)	3-1/4" (83)	2-15/16" (75)	1-3/32" (28)	1-3/16" (30)	3-1/2" (89)	29
GEBC-4	1-1/4"	6-1/2" (165)	4-5/16" (110)	3-1/4" (83)	2-15/16" (75)	1-3/32" (28)	1-3/16" (30)	3-1/2" (89)	29
GEBC-5	1-1/2"	6-1/2" (165)	4-5/16" (110)	3-1/4" (83)	2-15/16" (75)	1-3/32" (28)	1-3/16" (30)	3-1/2" (89)	29

L Type Outlet Body									
CATALOG NUMBER	HUB SIZE	A	B	DIMENSIONS			COVER OPENING	VOLUME CU. IN.	
				C	D	E	F		
GEBL-2	3/4"	5-1/2" (140)	4-5/16" (110)	3-1/4" (83)	2-15/16" (75)	1-3/32" (28)	1-3/16" (30)	3-1/2" (89)	29
GEBL-3	1"	5-1/2" (140)	4-5/16" (110)	3-1/4" (83)	2-15/16" (75)	1-3/32" (28)	1-3/16" (30)	3-1/2" (89)	29
GEBL-4	1-1/4"	5-1/2" (140)	4-5/16" (110)	3-1/4" (83)	2-15/16" (75)	1-3/32" (28)	1-3/16" (30)	3-1/2" (89)	29
GEBL-5	1-1/2"	5-1/2" (140)	4-5/16" (110)	3-1/4" (83)	2-15/16" (75)	1-3/32" (28)	1-3/16" (30)	3-1/2" (89)	29

C Type



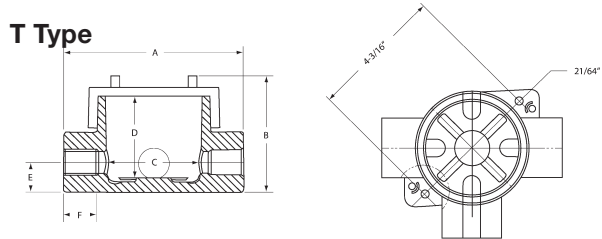
L Type



T Type Outlet Body									
CATALOG NUMBER	HUB SIZE	A	B	DIMENSIONS			COVER OPENING	VOLUME CU. IN.	
				C	D	E	F		
GEBT-2	3/4"	6-1/2" (165)	4-5/16" (110)	3-1/4" (83)	2-15/16" (75)	1-3/32" (28)	1-3/16" (30)	3-1/2" (89)	29
GEBT-3	1"	6-1/2" (165)	4-5/16" (110)	3-1/4" (83)	2-15/16" (75)	1-3/32" (28)	1-3/16" (30)	3-1/2" (89)	29
GEBT-4	1-1/4"	6-1/2" (165)	4-5/16" (110)	3-1/4" (83)	2-15/16" (75)	1-3/32" (28)	1-3/16" (30)	3-1/2" (89)	29
GEBT-5	1-1/2"	6-1/2" (165)	4-5/16" (110)	3-1/4" (83)	2-15/16" (75)	1-3/32" (28)	1-3/16" (30)	3-1/2" (89)	29
GEBT-24	2(3/4") 1(1-1/4")	6-1/2" (165)	4-5/16" (110)	3-1/4" (83)	2-15/16" (75)	1-3/32" (28)	1-3/16" (30)	3-1/2" (89)	29
GEBT-25	2(3/4") 1(1-1/2")	6-1/2" (165)	4-5/16" (110)	3-1/4" (83)	2-15/16" (75)	1-3/32" (28)	1-3/16" (30)	3-1/2" (89)	29

X Type Outlet Body									
CATALOG NUMBER	HUB SIZE	A	B	DIMENSIONS			COVER OPENING	VOLUME CU. IN.	
				C	D	E	F		
GEBX-2	3/4"	6-1/2" (165)	4-5/16" (110)	3-1/4" (83)	2-15/16" (75)	1-3/32" (28)	1-3/16" (30)	3-1/2" (89)	29
GEBX-3	1"	6-1/2" (165)	4-5/16" (110)	3-1/4" (83)	2-15/16" (75)	1-3/32" (28)	1-3/16" (30)	3-1/2" (89)	29
GEBX-4	1-1/4"	6-1/2" (165)	4-5/16" (110)	3-1/4" (83)	2-15/16" (75)	1-3/32" (28)	1-3/16" (30)	3-1/2" (89)	29
GEBX-5	1-1/2"	6-1/2" (165)	4-5/16" (110)	3-1/4" (83)	2-15/16" (75)	1-3/32" (28)	1-3/16" (30)	3-1/2" (89)	29

T Type



X Type

